

A FIVE-DAY HANDS-ON WORKSHOP BY

GREG DALY

22 - 26 JAN. 2018 ANVI POTTERY

30 JAN. - 3 FEB. 2018 IDC, IIT BOMBAY

DEVELOPING GLAZES & COLOUR

Greg Daly is internationally known and respected as a ceramic artist specialising in rich glaze effects, and also as the author of *Glazes and Glazing Techniques* (1995 Simon & Schuster). His work is represented in 24 international book publications, in 80 national and international art galleries and museums (including the National Gallery of Australia and the Victoria & Albert Museum, London), and he has won 36 national and international awards. He has held over 70 solo exhibitions and was President of Craft Australia from 1992-1995. He has exhibited in over 200 international and national group exhibitions.

Maximum number of participants: 15

CHARGES

(For Workshop at Anvi Pottery, not inclusive of food / accommodation)

Early Bird (Before 15th September 2017): Rs. 20,000/-

Registration after 15th September 2017: Rs. 25,000/-

(For Workshop at IDC, IIT Bombay, not inclusive of food / accommodation)

Rs. 20,000/- (for ceramic artists, studio potters)

Rs. 10,000/- (for teachers from educational institutions)

Rs. 5,000/- (for students from educational institutions)

	Summary of Activities	Testing
Day 1	<ul style="list-style-type: none"> • Introduction to materials and glaze composition. • OH&S. • What is a glaze? • Glaze balance. Silica/Flux= Silica matts, clear & flux matts • Glaze factors: Composition Materials, Claybody, Firing – Reduction/ Oxidation, time. Kilns, Application • Line blends – different ways for different purposes. Single, double, large bases small additions 	<p>Line Blend</p> <p>Random glazes. Materials used in random glazes. Rotation of materials in Random glaze.</p>
Day 2	<ul style="list-style-type: none"> • Fluxes– controls colour response from oxides. • Colour response from metal oxides • Testing tools – Line blends/ Triaxial, Square & colour blends. • Colour Blend – to develop colour in a glaze base. • Colour blend designing of and demonstration. • How to do a colour blend quickly & easily. 	<p>Colour Blend</p>
Day 3	<ul style="list-style-type: none"> • Glaze-on-glaze (thickness) Making of pots / tiles for application 	<p>Grid test of glazes.</p>
Day 4	<ul style="list-style-type: none"> • Application – Pour, spray, paint. 	<p>Application tests.</p>
Day 5	<ul style="list-style-type: none"> • Deciding on final base glaze/s and colour surface direction. • Review tests – make changes to base glaze and colour. 	<p>Refinement of glazes & surface outcomes</p>

For registering for the workshop, write to: rajam@iitb.ac.in

GREG DALY

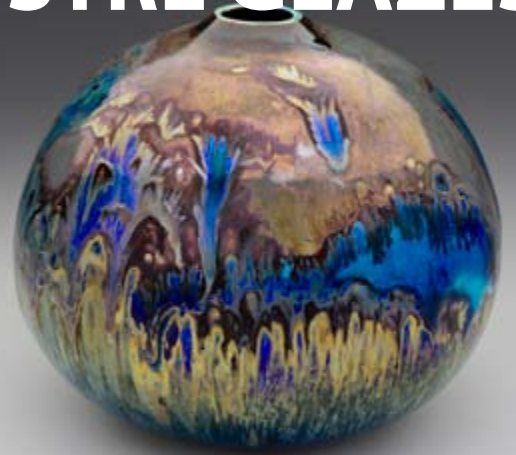
27 JANUARY 2018
@ ANVI POTTERY



Workshop Charges Rs. 5,000/-

For registration: rajam@iitb.ac.in
sandeep.manchekar@gmail.com

A DAY LONG HANDS-ON WORKSHOP ON
LUSTRE GLAZES



For registering for the workshop, write to: rajam@iitb.ac.in